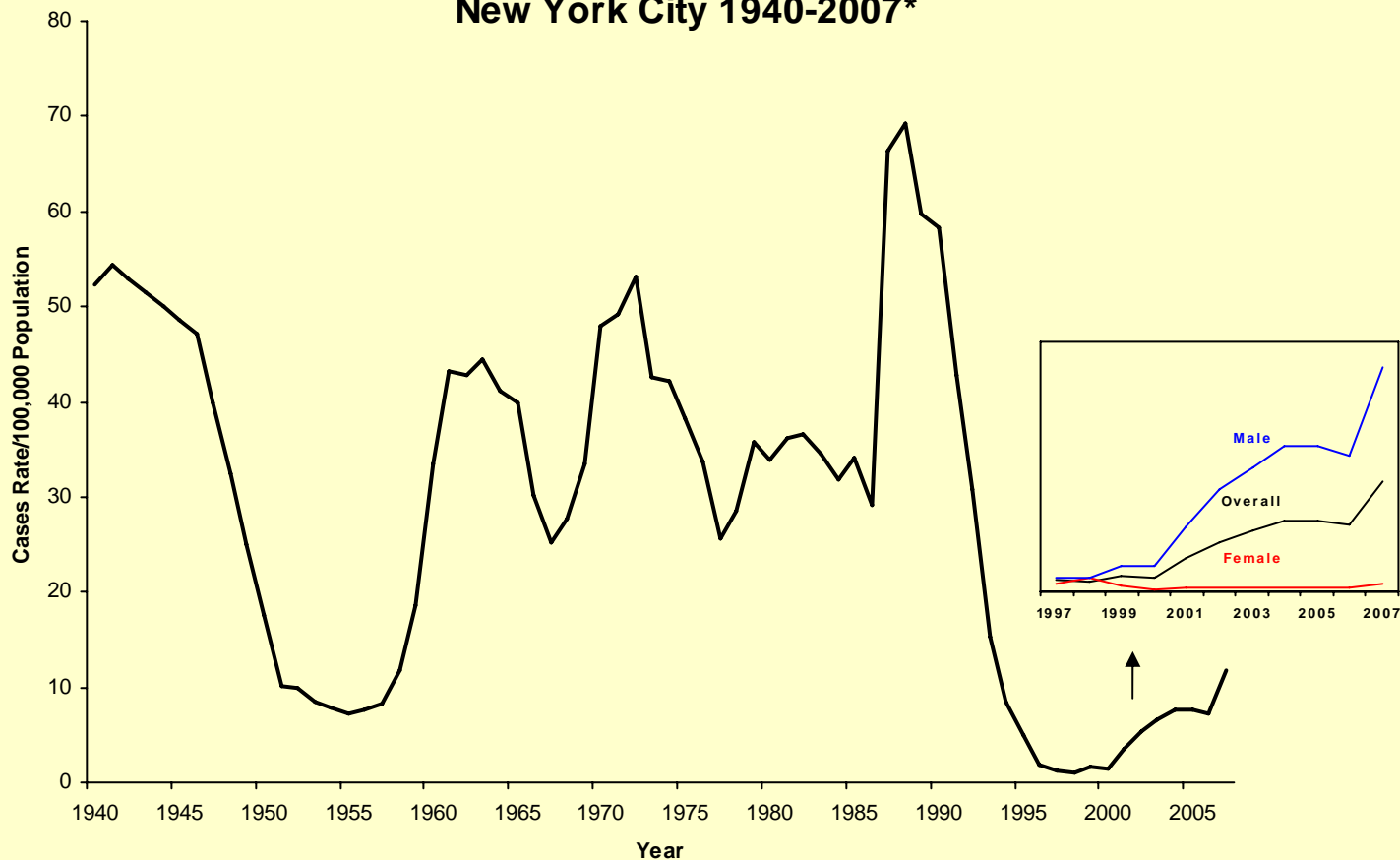


**Report Primary and Secondary (P&S) Syphilis**  
**New York City 1940-2007\***



\*Reported cases include males, females, and cases with unknown sex; 2007 rate based on preliminary 2007 data which have been annualized.

**Table of Contents: 3<sup>rd</sup> quarter 2007**

Overall quarterly information.....	2
<i>Chlamydia trachomatis</i> case rates by age and sex.....	3
<i>Neisseria gonorrhoeae</i> case rates by age and sex .....	4
Adolescent & young adult <i>Chlamydia trachomatis</i> by neighborhood.....	5
Adolescent & young adult <i>Neisseria gonorrhoeae</i> by neighborhood.....	6
Adolescent & young adult <i>Chlamydia trachomatis</i> trends.....	7
Adolescent & young adult <i>Neisseria gonorrhoeae</i> trends.....	7
Adolescent <i>Chlamydia trachomatis</i> by STD clinic.....	8
Young adult <i>Chlamydia trachomatis</i> by STD clinic.....	9
Adolescent <i>Neisseria gonorrhoeae</i> by STD clinic.....	10
Young adult <i>Neisseria gonorrhoeae</i> by STD clinic.....	11
HIV testing in NYC STD clinics.....	12
Fluoroquinolone-resistant <i>Neisseria gonorrhoeae</i> .....	13
Clinic visit information.....	13
Primary & Secondary and congenital syphilis trends.....	14
Anorectal gonorrhea prevalence among men who have sex with men.....	15
Syphilis seroreactivity among persons attending STD clinics.....	15
<i>Chlamydia trachomatis</i> cases by sex, and provider type.....	16
<i>Neisseria gonorrhoeae</i> cases by sex, and provider type.....	17
Primary & Secondary syphilis by neighborhood (map).....	18
<i>Chlamydia trachomatis</i> by neighborhood (map).....	19
<i>Neisseria gonorrhoeae</i> by neighborhood (map).....	20
List of STD clinics/ Citation information.....	21

Article 11 of the New York City Health Code requires that physicians and laboratories report positive findings for the following diseases to the Bureau of STD Control:

- **Chlamydia** (*Chlamydia trachomatis*)
- **Gonorrhea** (*Neisseria gonorrhoeae*)
- **Syphilis** (*Treponema pallidum*)
- **Chancroid** (*Haemophilus ducreyi*)
- **Granuloma inguinal**  
(*Calymmatobacterium granulomatis*)
- **Lymphogranuloma venereum/LGV**  
(*Chlamydia trachomatis* L1, L2, L3)
- **Non-gonococcal urethritis (NGU)**

**Table 1. Cumulative cases of sexually transmitted diseases reported to the New York City Department of Health and Mental Hygiene (NYC DOHMH) Bureau of STD Control (BSTDC) through 3<sup>rd</sup> quarter 2007 (January 01 - September 30, 2007) and 3<sup>rd</sup> quarter 2006 (January 01 - September 30, 2006), and case rate per 100,000 population for full year 2006.**

	2007 through 3 <sup>rd</sup> Quarter*	2006 through 3 <sup>rd</sup> Quarter	2006 Full Year	
	N	N	N	Case Rate/100,000
<b>Chlamydia<sup>1</sup></b>	<b>36524</b>	<b>30258</b>	<b>41236</b>	<b>514.92</b>
Female	24885	20491	28288	671.27
Male	11597	9765	12945	341.18
<b>Non-Gonococcal Urethritis</b>				
Male	3807	5599	7294	192.24
<b>Gonorrhea<sup>1</sup></b>	<b>7840</b>	<b>7506</b>	<b>10299</b>	<b>128.60</b>
Female	3370	3324	4566	108.35
Male	4464	4182	5731	151.05
<b>P&amp;S Syphilis<sup>1</sup></b>	<b>713</b>	<b>401</b>	<b>578</b>	<b>7.22</b>
Female	25	10	18	0.43
Male	688	391	560	14.76
<b>Early Latent Syphilis<sup>1</sup></b>	<b>754</b>	<b>696</b>	<b>901</b>	<b>11.25</b>
Female	129	164	199	4.72
Male	625	532	702	18.50
<b>Late latent Syphilis<sup>1,2</sup></b>	<b>1760</b>	<b>1587</b>	<b>2240</b>	<b>27.97</b>
Female	598	611	840	19.93
Male	1162	976	1400	36.90
<b>Neurosyphilis<sup>1,3</sup></b>	<b>50</b>	<b>21</b>	<b>28</b>	<b>0.35</b>
Female	14	2	3	0.07
Male	36	19	25	0.66
<b>Tertiary Syphilis<sup>1</sup></b>	<b>3</b>	<b>0</b>	<b>0</b>	<b>0.00</b>
Female	0	0	0	0.00
Male	3	0	0	0.00
<b>Congenital Syphilis<sup>1</sup></b>	<b>7</b>	<b>9</b>	<b>14</b>	<b>0.12 /1,000 live births</b>
<b>Chancroid</b>	<b>1</b>	<b>4</b>	<b>4</b>	<b>0.05</b>
Female	1	2	2	0.05
Male	0	2	2	0.05
<b>Granuloma Inguinale</b>	<b>0</b>	<b>0</b>	<b>0</b>	<b>0.00</b>
Female	0	0	0	0.00
Male	0	0	0	0.00
<b>Lymphogranuloma Venereum</b>	<b>26</b>	<b>11</b>	<b>14</b>	<b>0.17</b>
Female	1	2	2	0.05
Male	25	9	12	0.32

\* Preliminary data.

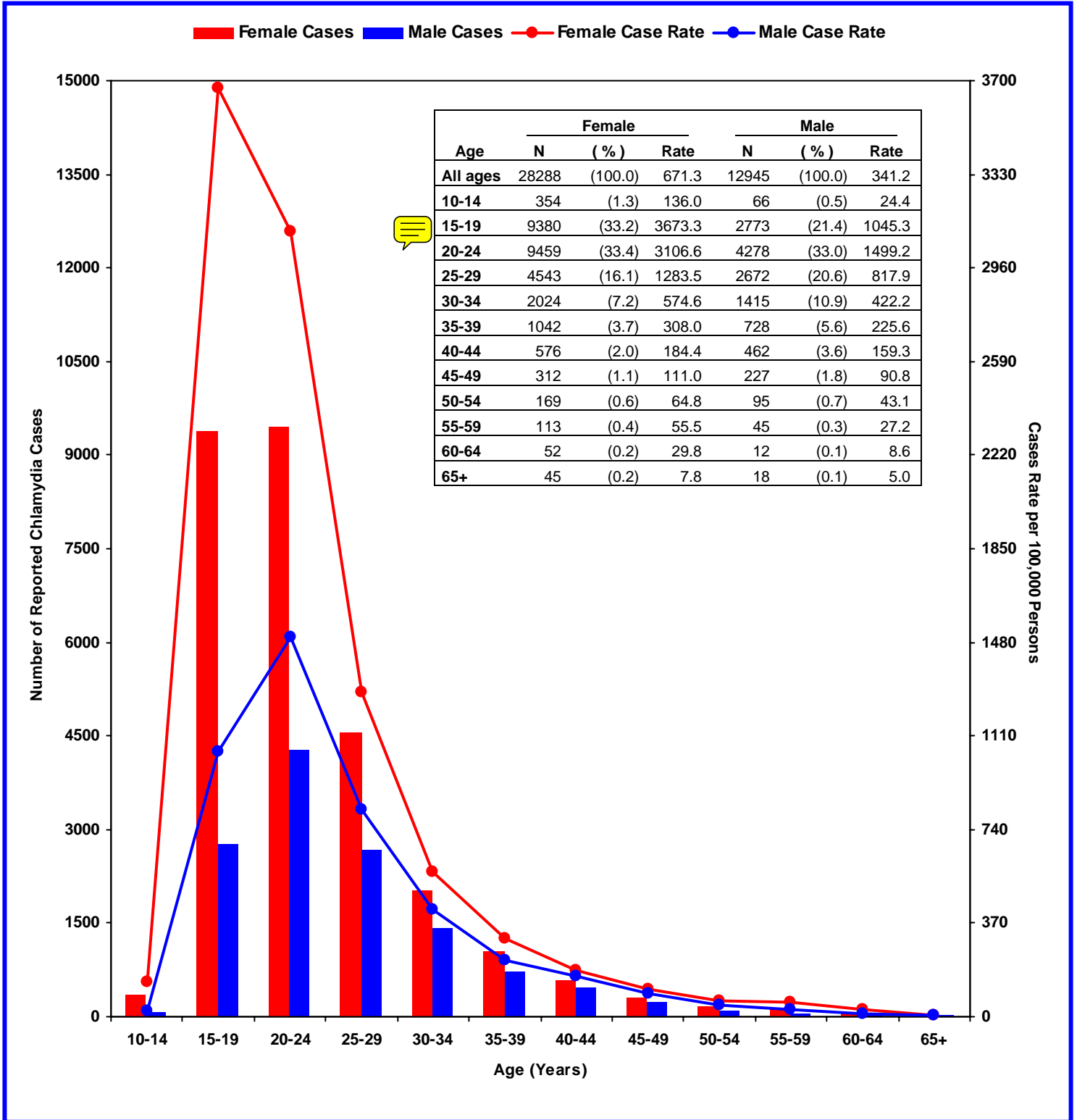
<sup>1</sup> Total case numbers and case rates includes cases with unknown sex in addition to males and females

<sup>2</sup> Includes the 'Latent syphilis of unknown duration' category; N=235 (3<sup>rd</sup> quarter 2007); 153 (3<sup>rd</sup> quarter 2006); 248 (full year 2006).

NOTE: Beginning in 2005, NYC adopted the Centers for Disease Control and Prevention surveillance case definitions. A category of late latent syphilis previously defined as a syphilis treponemal titer  $\geq 1:32$  among persons aged 13-45 was redefined as a syphilis treponemal titer  $\geq 1:32$  among persons ages 13-35.

<sup>3</sup> In 2005, CDC changed the requirements for how neurosyphilis should be reported from local and state health departments. Prior to 2005, a diagnosis of neurosyphilis could not be given in conjunction with another syphilis diagnosis (ie. neurosyphilis was a 'stand-alone' diagnosis). Beginning in 2005, syphilis of all stages is classified with respect to the presence or absence of neurologic involvement. Neurosyphilis cases reported in 2005, therefore, are a subset of syphilis cases of all stages.

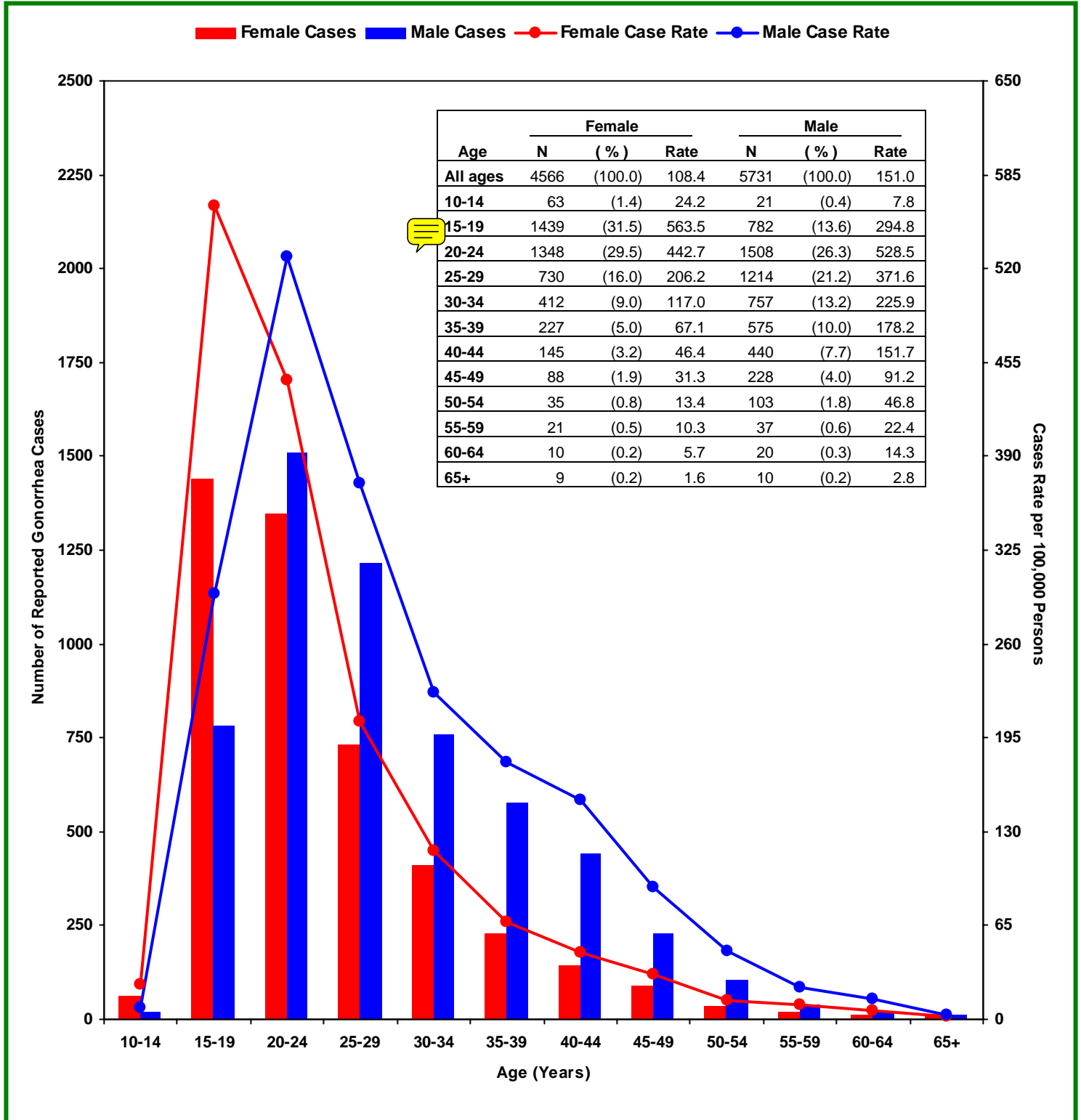
**Figure 1a. Chlamydia reported to the NYC DOHMH. Case rates (per 100,000 population) by age and sex\*, full year 2006.**



\*Excludes persons reported without information on sex or age.

Note: Because the majority of Chlamydia trachomatis infections are asymptomatic, differences in reported chlamydia case numbers and case rates by sex may be explained by the fact that females are more commonly screened than males.

**Figure 1b. Gonorrhea reported to the NYC DOHMH. Case rates (per 100,000 population) by age and sex\*, full year 2006.**



\*Excludes persons reported without information on sex or age.

Note: Gonorrhea infection detected at more than one anatomic site from the same person at the same time is counted as a single case of gonorrhea.

**Table 2. *Chlamydia trachomatis* infections among 15-19 and 20-24 year old persons, full year 2006, reported to the NYC DOHMH. Case numbers and case rates (per 100,000 population) by sex, age group<sup>1</sup>, and neighborhood<sup>2</sup>.**

	Citywide <i>Chlamydia trachomatis</i>											
	Female						Male					
	15-19 years old			20-24 years old			15-19 years old			20-24 years old		
	N	Rate	Rank <sup>3</sup>	N	Rate	Rank <sup>3</sup>	N	Rate	Rank <sup>3</sup>	N	Rate	Rank <sup>3</sup>
<b>BRONX</b>	<b>2640</b>	<b>5290</b>		<b>2305</b>	<b>4365</b>		<b>792</b>	<b>1570</b>		<b>1281</b>	<b>2794</b>	
Crotona	528	6331	4	406	4666	9	116	1403	8	149	2069	9
Fordham	443	4586	12	472	4170	11	118	1230	13	126	1281	17
Kingsbridge	59	2270	23	63	2126	20	11	411	28	20	770	25
Morrisania	525	6528	3	412	5185	5	162	2032	4	133	2009	10
Mott Haven	285	5289	8	251	4766	8	75	1353	9	104	2209	8
Northeast Bronx	321	5048	9	327	5299	4	90	1443	7	123	2331	6
Pelham	375	3941	16	324	3103	18	177	1746	5	592	6165	1
Unknown Neighborhood	104			50			43			34		
<b>BROOKLYN</b>	<b>3189</b>	<b>3669</b>		<b>3512</b>	<b>3725</b>		<b>710</b>	<b>786</b>		<b>1210</b>	<b>1360</b>	
Bensonhurst	23	483	41	54	927	36	5	97	38	20	334	36
Borough Park	58	510	40	108	952	35	6	48	41	31	257	39
Canarsie	279	3955	15	274	4138	12	71	994	18	113	1846	12
Coney Island	161	1870	26	151	1722	26	25	265	32	45	506	28
Crown Heights	783	6094	6	861	6386	1	185	1454	6	279	2577	4
Downtown Heights	187	3460	18	170	1954	23	44	782	21	75	903	23
East Flatbush	600	4762	11	740	5703	3	140	1122	15	277	2462	5
East New York	468	6164	5	438	5888	2	98	1301	11	141	2249	7
Greenpoint	47	1033	35	92	1688	27	11	222	35	25	445	31
Sunset Park	56	1389	32	81	1620	28	8	175	36	23	416	32
Williamsburg	390	4821	10	426	4921	7	89	1092	16	141	1749	14
Unknown Neighborhood	137			117			28			40		
<b>MANHATTAN</b>	<b>1761</b>	<b>4648</b>		<b>1714</b>	<b>2628</b>		<b>474</b>	<b>1290</b>		<b>813</b>	<b>1482</b>	
Central Harlem	376	6919	2	329	5031	6	127	2243	3	171	3034	3
Chelsea	70	3550	17	90	1753	25	19	1231	12	36	929	22
East Harlem	227	5825	7	189	4310	10	59	1326	10	94	1972	11
Gramercy Park	22	1418	31	43	634	40	3	279	30	15	352	34
Greenwich Village	134	10815	1	109	2763	19	61	5105	1	151	4704	2
Lower Manhattan	14	1693	28	26	1477	29	3	450	27	6	332	37
Union Square	127	2044	25	136	1441	30	28	474	26	57	687	26
Upper East Side	31	1110	34	56	737	39	14	593	24	23	465	29
Upper West Side	94	2105	24	109	1301	32	40	1045	17	58	943	20
Washington Heights	422	4447	13	412	3659	14	86	855	19	144	1207	18
Unknown Neighborhood	244			215			34			58		
<b>QUEENS</b>	<b>1561</b>	<b>2345</b>		<b>1720</b>	<b>2182</b>		<b>749</b>	<b>1032</b>		<b>899</b>	<b>1095</b>	
Astoria	95	1726	27	111	1181	33	14	231	33	36	368	33
Bayside	16	669	38	13	582	41	0	0	42	5	223	41
Flushing	36	547	39	61	781	38	6	86	39	19	251	40
Forest Hills	69	1120	33	78	1023	34	15	229	34	19	258	38
Fresh Meadows	26	969	36	42	1395	31	8	272	31	16	560	27
Jamaica	442	4344	14	429	4013	13	119	1144	14	167	1707	15
Rockaway	122	3424	19	124	3470	15	31	814	20	38	1165	19
Southeast Queens	233	3355	20	226	3430	17	53	779	22	96	1539	16
Southwest Queens	149	1680	30	197	2002	22	27	285	29	45	462	30
West Queens	231	1687	29	341	1888	24	445	2622	2	418	1801	13
Unknown Neighborhood	142			98			31			40		
<b>STATEN ISLAND</b>	<b>229</b>	<b>1626</b>		<b>208</b>	<b>1559</b>		<b>48</b>	<b>316</b>		<b>75</b>	<b>551</b>	
Port Richmond	75	3311	21	69	3448	16	14	567	25	18	881	24
South Beach	23	429	42	29	567	42	3	50	40	7	133	42
Stapleton	94	2442	22	79	2109	21	26	642	23	35	931	21
Willowbrook	19	728	37	23	927	36	3	111	37	9	351	35
Unknown Neighborhood	18			8			2			6		
<b>TOTAL NYC</b>	<b>9380</b>	<b>3673</b>		<b>9459</b>	<b>3107</b>		<b>2773</b>	<b>1045</b>		<b>4278</b>	<b>1499</b>	

<sup>1</sup> Does not include cases with unknown sex or age;<sup>2</sup> Neighborhoods defined by United Hospital Fund (UHF) definitions of NYC neighborhoods, which are specified by zip codes. For a complete listing of UHF neighborhoods and their zip codes, go to [nyc.gov/health](http://nyc.gov/health).<sup>3</sup> Neighborhoods ranked from highest case rate (1) to lowest case rate (42).

NOTE: Neighborhood of residence is assigned to each case using patient zip code of residence; in the event that patient zip code is unknown, the zip code of the provider who ordered the laboratory test is used. This procedure will have little impact on case rates by neighborhood unless a provider or health care facility performing a high volume of STD testing fails to report patient zip code, with the result that numerous cases of STD are attributed to the neighborhood of the provider rather than that of the patient.

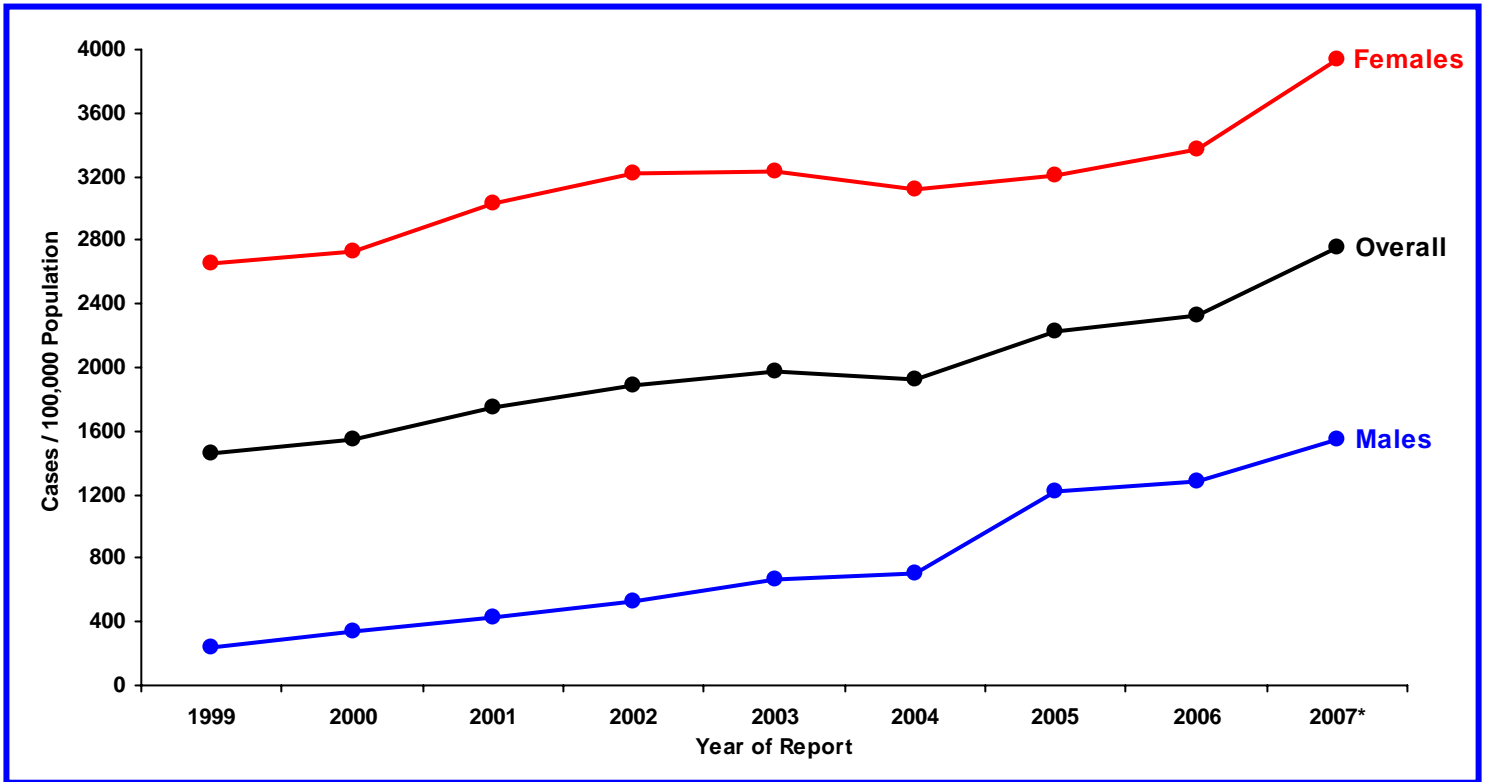
**Table 2. *Neisseria gonorrhoeae* infections among 15-19 and 20-24 year old persons, full year 2006, reported to the NYC DOHMH. Case numbers and case rates (per 100,000 population) by sex, age group<sup>1</sup>, and neighborhood<sup>2</sup>.**

	Citywide <i>Neisseria gonorrhoeae</i>											
	Female						Male					
	15-19 years old			20-24 years old			15-19 years old			20-24 years old		
	N	Rate	Rank <sup>3</sup>	N	Rate	Rank <sup>3</sup>	N	Rate	Rank <sup>3</sup>	N	Rate	Rank <sup>3</sup>
<b>BRONX</b>	<b>337</b>	<b>675</b>		<b>293</b>	<b>555</b>		<b>195</b>	<b>387</b>		<b>331</b>	<b>722</b>	
Crotona	77	923	6	53	609	10	37	448	9	56	778	14
Fordham	50	518	19	53	468	14	22	229	21	32	325	20
Kingsbridge	7	269	25	6	202	29	5	187	23	4	154	31
Morrisania	72	895	7	46	579	12	38	477	5	63	952	6
Mott Haven	37	687	12	35	665	8	26	469	6	35	743	16
Northeast Bronx	43	676	13	47	762	6	24	385	12	44	834	12
Pelham	40	420	21	46	441	16	31	306	16	87	906	9
Unknown Neighborhood	11			7			12			10		
<b>BROOKLYN</b>	<b>594</b>	<b>683</b>		<b>588</b>	<b>624</b>		<b>311</b>	<b>344</b>		<b>549</b>	<b>617</b>	
Bensonhurst	3	63	39	3	51	40	3	58	31	4	67	39
Borough Park	8	70	37	14	123	34	6	48	33	13	108	35
Canarsie	43	610	15	39	589	11	22	308	15	55	898	10
Coney Island	24	279	24	23	262	24	4	42	34	14	157	30
Crown Heights	170	1323	1	164	1216	2	87	684	3	136	1256	2
Downtown Heights	32	592	17	29	333	19	14	249	20	27	325	20
East Flatbush	110	873	8	109	840	4	55	441	10	103	915	8
East New York	98	1291	2	92	1237	1	47	624	4	48	766	15
Greenpoint	9	198	31	15	275	21	2	40	36	11	196	27
Sunset Park	1	25	42	0	0	42	3	66	30	4	72	38
Williamsburg	67	828	9	76	878	3	35	430	11	79	980	4
Unknown Neighborhood	29			24			33			55		
<b>MANHATTAN</b>	<b>228</b>	<b>602</b>		<b>205</b>	<b>314</b>		<b>129</b>	<b>351</b>		<b>335</b>	<b>611</b>	
Central Harlem	65	1196	3	51	780	5	39	689	2	77	1366	1
Chelsea	13	659	14	12	234	26	7	454	7	36	929	7
East Harlem	37	949	5	23	525	13	20	449	8	41	860	11
Gramercy Park	4	258	26	8	118	35	1	93	29	5	117	33
Greenwich Village	14	1130	4	9	228	27	13	1088	1	31	966	5
Lower Manhattan	1	121	35	6	341	18	2	300	17	3	166	28
Union Square	14	225	29	17	180	31	6	102	28	21	253	24
Upper East Side	6	215	30	6	79	38	3	127	26	17	344	19
Upper West Side	15	336	23	18	215	28	10	261	19	19	309	23
Washington Heights	35	369	22	36	320	20	15	149	25	54	453	18
Unknown Neighborhood	24			19			13			31		
<b>QUEENS</b>	<b>239</b>	<b>359</b>		<b>232</b>	<b>294</b>		<b>135</b>	<b>186</b>		<b>280</b>	<b>341</b>	
Astoria	14	254	27	17	181	30	3	49	32	24	245	25
Bayside	1	42	40	1	45	41	0	0	40	0	0	41
Flushing	5	76	36	9	115	36	0	0	40	4	53	40
Forest Hills	4	65	38	6	79	38	1	15	39	8	109	34
Fresh Meadows	5	186	33	8	266	22	1	34	37	3	105	36
Jamaica	82	806	10	69	645	9	34	327	14	80	818	13
Rockaway	25	702	11	25	699	7	10	263	18	32	981	3
Southeast Queens	42	605	16	28	425	17	12	176	24	32	513	17
Southwest Queens	20	226	28	26	264	23	4	42	34	14	144	32
West Queens	27	197	32	32	177	32	64	377	13	75	323	22
Unknown Neighborhood	14			11			6			8		
<b>STATEN ISLAND</b>	<b>41</b>	<b>291</b>		<b>30</b>	<b>225</b>		<b>12</b>	<b>79</b>		<b>13</b>	<b>95</b>	
Port Richmond	12	530	18	9	450	15	3	122	27	5	245	25
South Beach	2	37	41	8	156	33	1	17	38	0	0	41
Stapleton	17	442	20	9	240	25	8	198	22	6	160	29
Willowbrook	4	153	34	2	81	37	0	0	40	2	78	37
Unknown Neighborhood	6			2			0			0		
<b>TOTAL NYC</b>	<b>1439</b>	<b>564</b>		<b>1348</b>	<b>443</b>		<b>782</b>	<b>295</b>		<b>1508</b>	<b>528</b>	

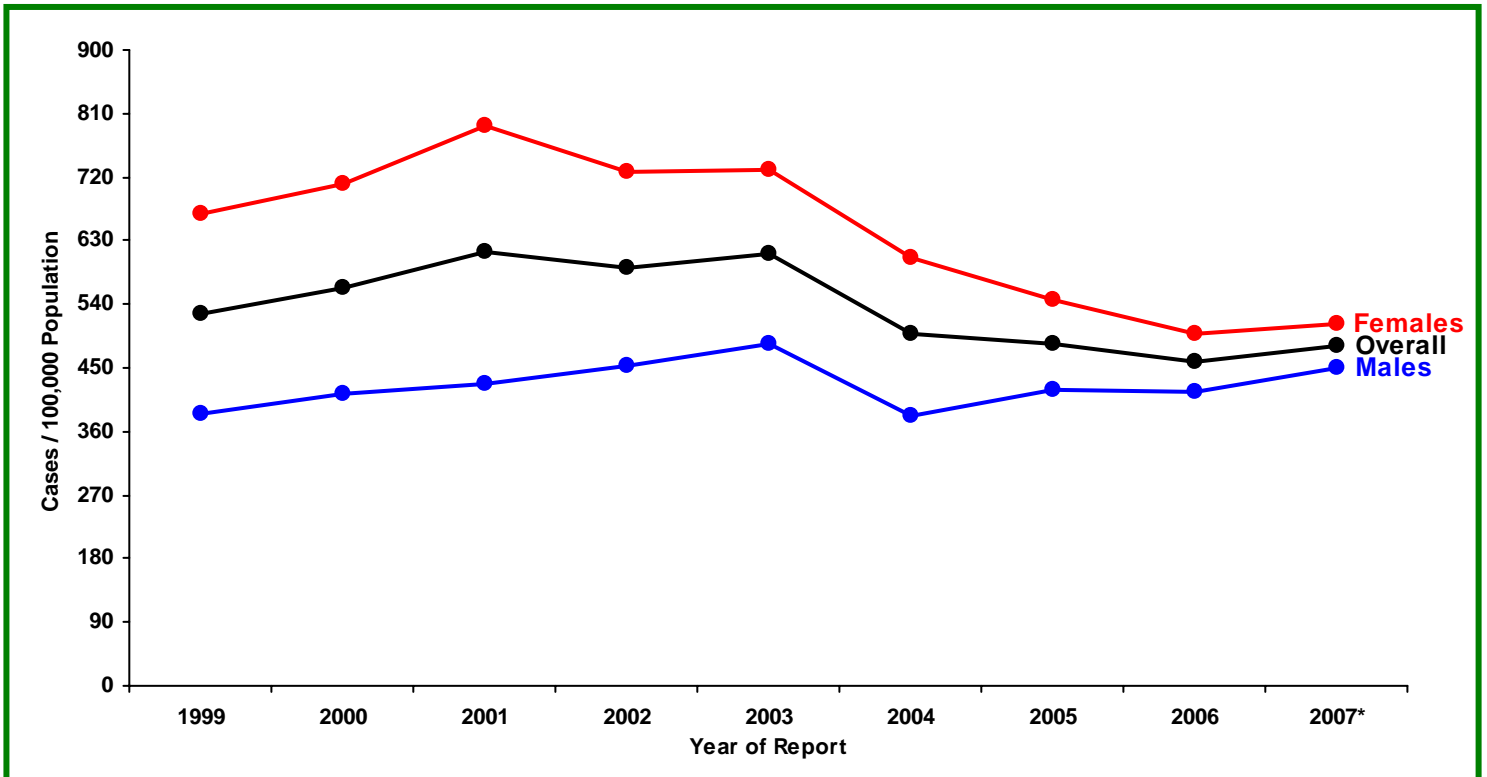
<sup>1</sup> Does not include cases with unknown sex or age;<sup>2</sup> Neighborhoods defined by United Hospital Fund (UHF) definitions of NYC neighborhoods, which are specified by zip codes. For a complete listing of UHF neighborhoods and their zip codes, go to [nyc.gov/health](http://nyc.gov/health).<sup>3</sup> Neighborhoods ranked from highest case rate (1) to lowest case rate (42).

NOTE: Neighborhood of residence is assigned to each case using patient zip code of residence; in the event that patient zip code is unknown, the zip code of the provider who ordered the laboratory test is used. This procedure will have little impact on case rates by neighborhood unless a provider or health care facility performing a high volume of STD testing fails to report patient zip code, with the result that numerous cases of STD are attributed to the neighborhood of the provider rather than that of the patient.

**Figure 2a. Chlamydia among persons aged 15-24 years reported to the NYC DOHMH. Case rates (per 100,000 population) by sex, 1999 through 2007\*.**



**Figure 2b. Gonorrhea among persons aged 15-24 years reported to the NYC DOHMH. Case rates (per 100,000 population) by sex, 1999 through 2007\*.**



\* 2007 rate based on preliminary data which have been annualized.

**Table 4.1. Chlamydia positivity for 15-19 year old persons attending NYC DOHMH BSTDC clinics. Positivity rates\* by clinic site and sex, for 3<sup>rd</sup> quarter 2007 (January 01 - September 30, 2007), compared to 3<sup>rd</sup> quarter 2006 (January 01 - September 30, 2006) and full year 2006 (January 01 - December 31, 2006).**

**Chlamydia cases, 15-19 years old, BSTDC Clinics**

	2007 through 3 <sup>rd</sup> Quarter			2006 through 3 <sup>rd</sup> Quarter			2006 Full Year		
	Test	Positive tests		Test	Positive tests		Test	Positive tests	
	N	N	(%)	N	N	(%)	N	N	(%)
<b>Central Harlem</b>	<b>653</b>	<b>119</b>	<b>(18)</b>	<b>677</b>	<b>126</b>	<b>(19)</b>	<b>809</b>	<b>138</b>	<b>(17)</b>
Female	442	68	(15)	478	82	(17)	560	92	(16)
Male	210	51	(24)	198	44	(22)	248	46	(19)
<b>Chelsea</b>	<b>653</b>	<b>70</b>	<b>(11)</b>	<b>552</b>	<b>58</b>	<b>(11)</b>	<b>702</b>	<b>77</b>	<b>(11)</b>
Female	372	49	(13)	336	37	(11)	421	49	(12)
Male	280	21	(8)	216	21	(10)	279	27	(10)
<b>Corona</b>	<b>243</b>	<b>28</b>	<b>(12)</b>	<b>181</b>	<b>24</b>	<b>(13)</b>	<b>242</b>	<b>33</b>	<b>(14)</b>
Female	145	17	(12)	106	16	(15)	135	20	(15)
Male	98	11	(11)	75	8	(11)	107	13	(12)
<b>Crown Heights</b>	<b>633</b>	<b>134</b>	<b>(21)</b>	<b>441</b>	<b>102</b>	<b>(23)</b>	<b>598</b>	<b>131</b>	<b>(22)</b>
Female	411	84	(20)	273	61	(22)	381	78	(20)
Male	220	50	(23)	168	41	(24)	216	53	(25)
<b>East Harlem</b>	<b>199</b>	<b>39</b>	<b>(20)</b>	<b>176</b>	<b>27</b>	<b>(15)</b>	<b>257</b>	<b>43</b>	<b>(17)</b>
Female	107	20	(19)	101	14	(14)	152	24	(16)
Male	91	19	(21)	75	13	(17)	105	19	(18)
<b>Fort Greene</b>	<b>1385</b>	<b>278</b>	<b>(20)</b>	<b>1174</b>	<b>242</b>	<b>(21)</b>	<b>1574</b>	<b>319</b>	<b>(20)</b>
Female	908	179	(20)	728	145	(20)	1001	194	(19)
Male	476	99	(21)	443	97	(22)	570	125	(22)
<b>Jamaica</b>	<b>1698</b>	<b>314</b>	<b>(18)</b>	<b>1362</b>	<b>244</b>	<b>(18)</b>	<b>1841</b>	<b>331</b>	<b>(18)</b>
Female	1154	214	(19)	920	168	(18)	1270	226	(18)
Male	543	100	(18)	442	76	(17)	570	105	(18)
<b>Morrisania</b>	<b>1235</b>	<b>221</b>	<b>(18)</b>	<b>981</b>	<b>222</b>	<b>(23)</b>	<b>1328</b>	<b>284</b>	<b>(21)</b>
Female	791	134	(17)	646	146	(23)	864	184	(21)
Male	443	87	(20)	331	75	(23)	460	99	(22)
<b>Richmond</b>	<b>63</b>	<b>6</b>	<b>(10)</b>	<b>58</b>	<b>7</b>	<b>(12)</b>	<b>75</b>	<b>13</b>	<b>(17)</b>
Female	27	2	(7)	35	4	(11)	46	8	(17)
Male	36	4	(11)	21	3	(14)	27	5	(19)
<b>Riverside</b>	<b>458</b>	<b>64</b>	<b>(14)</b>	<b>435</b>	<b>76</b>	<b>(17)</b>	<b>576</b>	<b>104</b>	<b>(18)</b>
Female	282	33	(12)	276	48	(17)	369	68	(18)
Male	175	30	(17)	159	28	(18)	207	36	(17)
<b>Overall</b>	<b>7220</b>	<b>1273</b>	<b>(18)</b>	<b>6037</b>	<b>1128</b>	<b>(19)</b>	<b>8002</b>	<b>1473</b>	<b>(18)</b>
Female	4639	800	(17)	3899	721	(18)	5199	943	(18)
Male	2572	472	(18)	2128	406	(19)	2789	528	(19)

\* Chlamydia tests performed by nucleic acid amplification tests (NAAT) on male urine or urethral specimens, and female endocervical or urine specimens. Positivity calculated using number of positive NAAT tests as the numerator and number of NAAT tests performed as the denominator.



**Table 4.2. Chlamydia positivity for 20-24 year old persons attending NYC DOHMH BSTDC clinics. Positivity rates\* by clinic site and sex, for 3<sup>rd</sup> quarter 2007 (January 01 - September 30, 2007), compared to 3<sup>rd</sup> quarter 2006 (January 01 - September 30, 2006) and full year 2006 (January 01 - December 31, 2006).**

**Chlamydia cases, 20-24 years old, BSTDC Clinics**

	2007 through 3 <sup>rd</sup> Quarter			2006 through 3 <sup>rd</sup> Quarter			2006 Full Year		
	Test	Positive tests		Test	Positive tests		Test	Positive tests	
	N	N	(%)	N	N	(%)	N	N	(%)
<b>Central Harlem</b>	<b>1514</b>	<b>187</b>	<b>(12)</b>	<b>1493</b>	<b>205</b>	<b>(14)</b>	<b>1793</b>	<b>244</b>	<b>(14)</b>
Female	829	89	(11)	802	85	(11)	968	101	(10)
Male	685	98	(14)	686	118	(17)	820	141	(17)
<b>Chelsea</b>	<b>2875</b>	<b>232</b>	<b>(8)</b>	<b>2396</b>	<b>199</b>	<b>(8)</b>	<b>3117</b>	<b>265</b>	<b>(9)</b>
Female	1219	83	(7)	992	76	(8)	1308	100	(8)
Male	1654	149	(9)	1403	123	(9)	1808	165	(9)
<b>Corona</b>	<b>616</b>	<b>84</b>	<b>(14)</b>	<b>424</b>	<b>45</b>	<b>(11)</b>	<b>592</b>	<b>72</b>	<b>(12)</b>
Female	285	30	(11)	188	18	(10)	264	34	(13)
Male	331	54	(16)	235	27	(11)	327	38	(12)
<b>Crown Heights</b>	<b>1091</b>	<b>164</b>	<b>(15)</b>	<b>957</b>	<b>159</b>	<b>(17)</b>	<b>1237</b>	<b>188</b>	<b>(15)</b>
Female	525	62	(12)	447	58	(13)	592	66	(11)
Male	566	102	(18)	510	101	(20)	645	122	(19)
<b>East Harlem</b>	<b>480</b>	<b>64</b>	<b>(13)</b>	<b>473</b>	<b>54</b>	<b>(11)</b>	<b>735</b>	<b>94</b>	<b>(13)</b>
Female	231	23	(10)	219	16	(7)	338	28	(8)
Male	249	41	(16)	251	38	(15)	394	66	(17)
<b>Fort Greene</b>	<b>2765</b>	<b>392</b>	<b>(14)</b>	<b>2430</b>	<b>408</b>	<b>(17)</b>	<b>3266</b>	<b>520</b>	<b>(16)</b>
Female	1361	153	(11)	1126	134	(12)	1548	183	(12)
Male	1402	239	(17)	1303	273	(21)	1717	336	(20)
<b>Jamaica</b>	<b>2772</b>	<b>438</b>	<b>(16)</b>	<b>2334</b>	<b>335</b>	<b>(14)</b>	<b>3129</b>	<b>455</b>	<b>(15)</b>
Female	1335	172	(13)	1124	136	(12)	1491	175	(12)
Male	1435	266	(19)	1209	199	(16)	1637	280	(17)
<b>Morrisania</b>	<b>2397</b>	<b>394</b>	<b>(16)</b>	<b>2104</b>	<b>341</b>	<b>(16)</b>	<b>2823</b>	<b>483</b>	<b>(17)</b>
Female	1162	140	(12)	1037	120	(12)	1397	165	(12)
Male	1235	254	(21)	1057	221	(21)	1416	318	(22)
<b>Richmond</b>	<b>184</b>	<b>17</b>	<b>(9)</b>	<b>172</b>	<b>28</b>	<b>(16)</b>	<b>233</b>	<b>35</b>	<b>(15)</b>
Female	63	7	(11)	79	10	(13)	105	10	(10)
Male	121	10	(8)	93	18	(19)	127	24	(19)
<b>Riverside</b>	<b>1338</b>	<b>138</b>	<b>(10)</b>	<b>1374</b>	<b>123</b>	<b>(9)</b>	<b>1811</b>	<b>166</b>	<b>(9)</b>
Female	676	51	(8)	626	51	(8)	853	69	(8)
Male	659	86	(13)	747	72	(10)	957	97	(10)
<b>Overall</b>	<b>16032</b>	<b>2110</b>	<b>(13)</b>	<b>14157</b>	<b>1897</b>	<b>(13)</b>	<b>18736</b>	<b>2522</b>	<b>(13)</b>
Female	7686	810	(11)	6640	704	(11)	8864	931	(11)
Male	8337	1299	(16)	7494	1190	(16)	9848	1587	(16)

\* Chlamydia tests performed by nucleic acid amplification tests (NAAT) on male urine or urethral specimens, and female endocervical or urine specimens. Positivity calculated using number of positive NAAT tests as the numerator and number of NAAT tests performed as the denominator.

**Table 5.1. Gonorrhea positivity for 15-19 year old persons attending NYC DOHMH BSTDC clinics. Positivity rates\* by clinic site and sex, for 3<sup>rd</sup> quarter 2007 (January 01 - September 30, 2007), compared to 3<sup>rd</sup> quarter 2006 (January 01 - September 30, 2006) and full year 2006 (January 01 - December 31, 2006).**

**Gonorrhea cases, 15-19 years old, BSTDC Clinics**

	2007 through 3 <sup>rd</sup> Quarter			2006 through 3 <sup>rd</sup> Quarter			2006 Full Year		
	Test	Positive tests		Test	Positive tests		Test	Positive tests	
	N	N	(%)	N	N	(%)	N	N	(%)
<b>Central Harlem</b>	<b>653</b>	<b>28</b>	<b>(4)</b>	<b>677</b>	<b>36</b>	<b>(5)</b>	<b>809</b>	<b>41</b>	<b>(5)</b>
Female	442	12	(3)	478	21	(4)	560	24	(4)
Male	210	16	(8)	198	15	(8)	248	17	(7)
<b>Chelsea</b>	<b>653</b>	<b>17</b>	<b>(3)</b>	<b>552</b>	<b>12</b>	<b>(2)</b>	<b>702</b>	<b>16</b>	<b>(2)</b>
Female	372	5	(1)	336	5	(1)	421	7	(2)
Male	280	12	(4)	216	7	(3)	279	9	(3)
<b>Corona</b>	<b>243</b>	<b>6</b>	<b>(2)</b>	<b>181</b>	<b>2</b>	<b>(1)</b>	<b>242</b>	<b>3</b>	<b>(1)</b>
Female	145	2	(1)	106	1	(1)	135	1	(1)
Male	98	4	(4)	75	1	(1)	107	2	(2)
<b>Crown Heights</b>	<b>633</b>	<b>31</b>	<b>(5)</b>	<b>441</b>	<b>31</b>	<b>(7)</b>	<b>598</b>	<b>36</b>	<b>(6)</b>
Female	411	14	(3)	273	15	(5)	381	15	(4)
Male	220	17	(8)	168	16	(10)	216	21	(10)
<b>East Harlem</b>	<b>199</b>	<b>9</b>	<b>(5)</b>	<b>176</b>	<b>9</b>	<b>(5)</b>	<b>257</b>	<b>11</b>	<b>(4)</b>
Female	107	4	(4)	101	4	(4)	152	5	(3)
Male	91	5	(5)	75	5	(7)	105	6	(6)
<b>Fort Greene</b>	<b>1384</b>	<b>96</b>	<b>(7)</b>	<b>1174</b>	<b>68</b>	<b>(6)</b>	<b>1574</b>	<b>96</b>	<b>(6)</b>
Female	908	52	(6)	728	32	(4)	1001	49	(5)
Male	475	44	(9)	443	36	(8)	570	47	(8)
<b>Jamaica</b>	<b>1698</b>	<b>59</b>	<b>(3)</b>	<b>1362</b>	<b>56</b>	<b>(4)</b>	<b>1841</b>	<b>77</b>	<b>(4)</b>
Female	1154	32	(3)	920	39	(4)	1270	52	(4)
Male	543	27	(5)	442	17	(4)	570	25	(4)
<b>Morrisania</b>	<b>1234</b>	<b>53</b>	<b>(4)</b>	<b>981</b>	<b>42</b>	<b>(4)</b>	<b>1328</b>	<b>60</b>	<b>(5)</b>
Female	791	27	(3)	646	27	(4)	864	37	(4)
Male	442	26	(6)	331	15	(5)	460	23	(5)
<b>Richmond</b>	<b>63</b>	<b>1</b>	<b>(2)</b>	<b>58</b>	<b>3</b>	<b>(5)</b>	<b>75</b>	<b>3</b>	<b>(4)</b>
Female	27	0	(0)	35	3	(9)	46	3	(7)
Male	36	1	(3)	21	0	(0)	27	0	(0)
<b>Riverside</b>	<b>457</b>	<b>16</b>	<b>(4)</b>	<b>435</b>	<b>16</b>	<b>(4)</b>	<b>576</b>	<b>23</b>	<b>(4)</b>
Female	282	4	(1)	276	5	(2)	369	11	(3)
Male	174	12	(7)	159	11	(7)	207	12	(6)
<b>Overall</b>	<b>7217</b>	<b>316</b>	<b>(4)</b>	<b>6037</b>	<b>275</b>	<b>(5)</b>	<b>8002</b>	<b>366</b>	<b>(5)</b>
Female	4639	152	(3)	3899	152	(4)	5199	204	(4)
Male	2569	164	(6)	2128	123	(6)	2789	162	(6)

\* Gonorrhea tests performed by nucleic acid amplification tests (NAAT) on male urine or urethral specimens, and female endocervical or urine specimens. Positivity calculated using number of positive NAAT tests as the numerator and number of NAAT tests performed as the denominator. Gonorrhea culture data are not included in this table.

**Table 5.2. Gonorrhea positivity for 20-24 year old persons attending NYC DOHMH BSTDC clinics. Positivity rates\* by clinic site and sex, for 3<sup>rd</sup> quarter 2007 (January 01 - September 30, 2007), compared to 3<sup>rd</sup> quarter 2006 (January 01 - September 30, 2006) and full year 2006 (January 01 - December 31, 2006).**

**Gonorrhea cases, 20-24 years old, BSTDC Clinics**

	2007 through 3 <sup>rd</sup> Quarter			2006 through 3 <sup>rd</sup> Quarter			2006 Full Year		
	Test	Positive tests		Test	Positive tests		Test	Positive tests	
	N	N	(%)	N	N	(%)	N	N	(%)
<b>Central Harlem</b>	<b>1514</b>	<b>68</b>	<b>(4)</b>	<b>1493</b>	<b>67</b>	<b>(4)</b>	<b>1793</b>	<b>86</b>	<b>(5)</b>
Female	829	11	(1)	802	18	(2)	968	26	(3)
Male	685	57	(8)	686	49	(7)	820	60	(7)
<b>Chelsea</b>	<b>2864</b>	<b>99</b>	<b>(3)</b>	<b>2396</b>	<b>77</b>	<b>(3)</b>	<b>3117</b>	<b>105</b>	<b>(3)</b>
Female	1219	15	(1)	992	8	(1)	1308	14	(1)
Male	1643	84	(5)	1403	69	(5)	1808	91	(5)
<b>Corona</b>	<b>616</b>	<b>10</b>	<b>(2)</b>	<b>424</b>	<b>5</b>	<b>(1)</b>	<b>592</b>	<b>5</b>	<b>(1)</b>
Female	285	4	(1)	188	4	(2)	264	4	(2)
Male	331	6	(2)	235	1	(0)	327	1	(0)
<b>Crown Heights</b>	<b>1089</b>	<b>62</b>	<b>(6)</b>	<b>957</b>	<b>62</b>	<b>(6)</b>	<b>1237</b>	<b>79</b>	<b>(6)</b>
Female	525	17	(3)	447	21	(5)	592	25	(4)
Male	564	45	(8)	510	41	(8)	645	54	(8)
<b>East Harlem</b>	<b>480</b>	<b>18</b>	<b>(4)</b>	<b>473</b>	<b>14</b>	<b>(3)</b>	<b>735</b>	<b>27</b>	<b>(4)</b>
Female	231	6	(3)	219	2	(1)	338	5	(1)
Male	249	12	(5)	251	12	(5)	394	22	(6)
<b>Fort Greene</b>	<b>2764</b>	<b>123</b>	<b>(4)</b>	<b>2430</b>	<b>127</b>	<b>(5)</b>	<b>3266</b>	<b>160</b>	<b>(5)</b>
Female	1361	38	(3)	1126	38	(3)	1548	48	(3)
Male	1401	85	(6)	1303	89	(7)	1717	112	(7)
<b>Jamaica</b>	<b>2770</b>	<b>105</b>	<b>(4)</b>	<b>2334</b>	<b>87</b>	<b>(4)</b>	<b>3129</b>	<b>118</b>	<b>(4)</b>
Female	1335	34	(3)	1124	28	(2)	1491	37	(2)
Male	1433	71	(5)	1209	59	(5)	1637	81	(5)
<b>Morrisania</b>	<b>2396</b>	<b>109</b>	<b>(5)</b>	<b>2104</b>	<b>75</b>	<b>(4)</b>	<b>2823</b>	<b>99</b>	<b>(4)</b>
Female	1162	36	(3)	1037	27	(3)	1397	34	(2)
Male	1234	73	(6)	1057	48	(5)	1416	65	(5)
<b>Richmond</b>	<b>184</b>	<b>1</b>	<b>(1)</b>	<b>172</b>	<b>7</b>	<b>(4)</b>	<b>233</b>	<b>8</b>	<b>(3)</b>
Female	63	0	(0)	79	1	(1)	105	1	(1)
Male	121	1	(1)	93	6	(6)	127	7	(6)
<b>Riverside</b>	<b>1334</b>	<b>41</b>	<b>(3)</b>	<b>1374</b>	<b>40</b>	<b>(3)</b>	<b>1811</b>	<b>52</b>	<b>(3)</b>
Female	675	11	(2)	626	7	(1)	853	9	(1)
Male	656	30	(5)	747	33	(4)	957	43	(4)
<b>Overall</b>	<b>16011</b>	<b>636</b>	<b>(4)</b>	<b>14157</b>	<b>561</b>	<b>(4)</b>	<b>18736</b>	<b>739</b>	<b>(4)</b>
Female	7685	172	(2)	6640	154	(2)	8864	203	(2)
Male	8317	464	(6)	7494	407	(5)	9848	536	(5)

\* Gonorrhea tests performed by nucleic acid amplification tests (NAAT) on male urine or urethral specimens, and female endocervical or urine specimens. Positivity calculated using number of positive NAAT tests as the numerator and number of NAAT tests performed as the denominator. Gonorrhea culture data are not included in this table.

**Table 6. Anonymous and confidential<sup>1</sup> HIV testing performed by rapid and conventional HIV tests at the NYC DOHMH BSTDC clinics. HIV positivity rates for 3<sup>rd</sup> quarter 2007 (January 01 - September 30, 2007), compared to 3<sup>rd</sup> quarter 2006 (January 01 - September 30, 2006) and full year 2006 (January 01 - December 31, 2006).**

HIV rapid and conventional tests at BSTDC clinics

	2007 through 3 <sup>rd</sup> Quarter				2006 through 3 <sup>rd</sup> Quarter				2006 Full Year			
	Rapid Tests		Conventional Tests		Rapid Tests		Conventional Tests		Rapid Tests		Conventional Tests	
	N	%	N	(% <sup>2</sup> )	N	%	N	(% <sup>2</sup> )	N	%	N	(% <sup>2</sup> )
<b>Confidential</b>												
Total Tests	37656		2168		33180		1786		43890		2399	
Returning for Test Result	35978	(95.5)	980	(45.2)	31779	(95.8)	1113	(62.3)	41965	(95.6)	1487	(62.0)
<b>Positive Results</b>												
Total Tests	364	(1.0)	46	(2.1)	336	(1.0)	39	(2.2)	433	(1.0)	50	(2.1)
Returning for Test Result	351	(96.4)	31	(67.4)	326	(97.0)	26	(66.7)	418	(96.5)	31	(62.0)
<b>Anonymous</b>												
Total Tests	5590		60		7103		88		9001		119	
Returning for Test Result	5419	(96.9)	28	(46.7)	6785	(95.5)	57	(64.8)	8597	(95.5)	75	(63.0)
<b>Positive Results</b>												
Total Tests	76	(1.4)	1	(1.7)	79	(1.1)	2	(2.3)	101	(1.1)	2	(1.7)
Returning for Test Result	73	(96.1)	1	(100.0)	76	(96.2)	1	(50.0)	97	(96.0)	1	(50.0)
<b>Confidential &amp; Anonymous</b>												
Total Tests	43246		2228		40283		1874		52891		2518	
Returning for Test Result	41397	(95.7)	1008	(45.2)	38564	(95.7)	1170	(62.4)	50562	(95.6)	1562	(62.0)
<b>Positive Results</b>												
Total Tests	440	(1.0)	47	(2.1)	415	(1.0)	41	(2.2)	534	(1.0)	52	(2.1)
Returning for Test Result	424	(96.4)	32	(68.1)	402	(96.9)	27	(65.9)	515	(96.4)	32	(61.5)

<sup>1</sup> Anonymous testing uses codes for identification; confidential testing uses patient names.

<sup>2</sup> The percentage of persons returning for HIV test results with a conventional test may increase with time since testing.

**Table 7. Fluoroquinolone-resistant *Neisseria gonorrhoea* isolates reported by BSTDC clinics, 3<sup>rd</sup> quarter 2007 (January 01 - September 30, 2007), compared to 3<sup>rd</sup> quarter 2006 (January 01 - September 30, 2006) and full year 2006 (January 01 - December 31, 2006).**

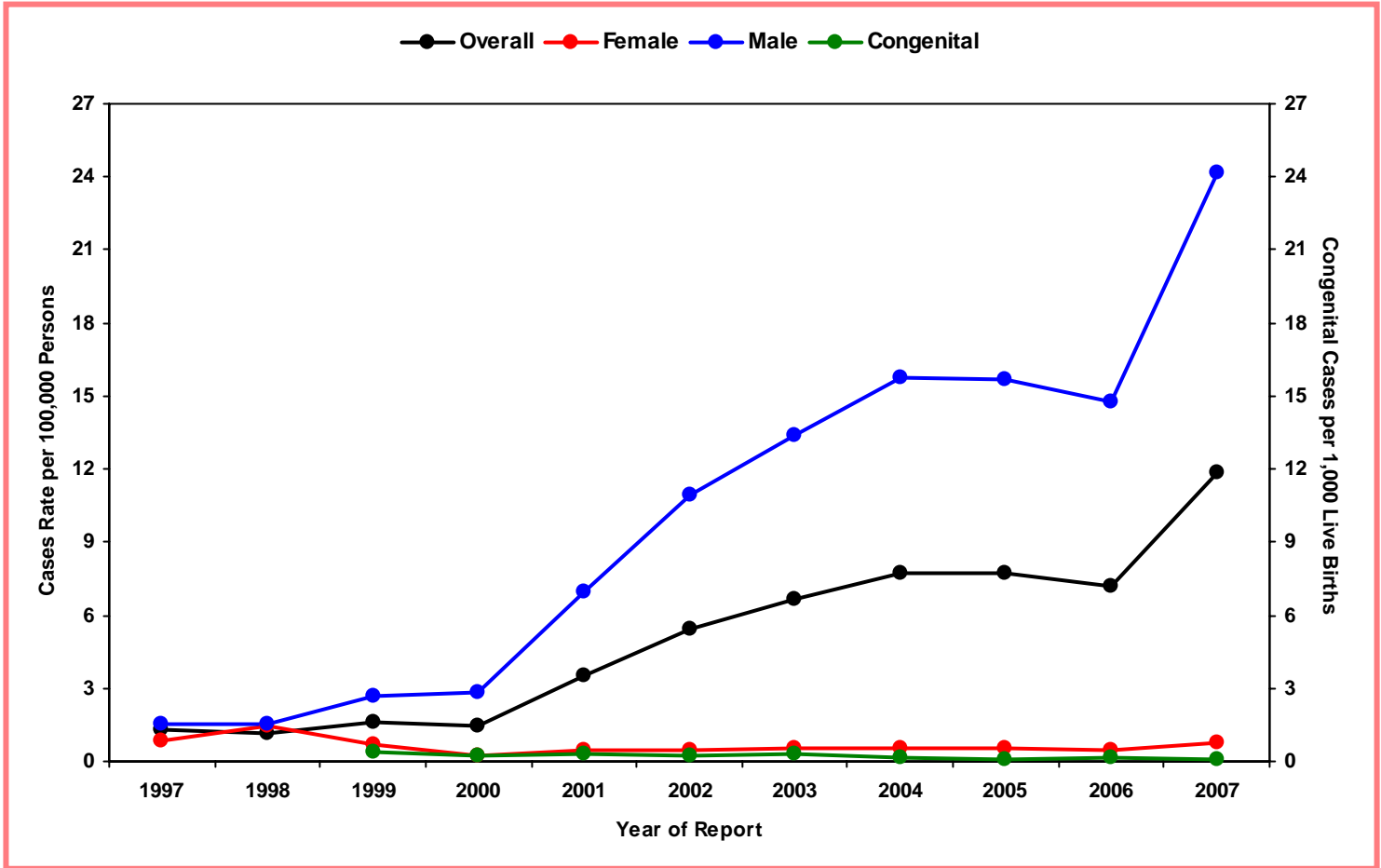
Anatomic Site	2007 through 3 <sup>rd</sup> Quarter			2006 through 3 <sup>rd</sup> Quarter			2006 Full Year		
	Gonorrhea Culture Positive	Ciprofloxin/Ofloxin Resistant	(%*)	Gonorrhea Culture Positive	Ciprofloxin/Ofloxin Resistant	(%*)	Gonorrhea Culture Positive	Ciprofloxin/Ofloxin Resistant	(%*)
<b>Female</b>									
All	57	4	(7)	65	1	(2)	87	1	(1)
Anal	1	0	(0)	3	0	(0)	4	0	(0)
Oral	8	1	(13)	3	0	(0)	3	0	(0)
Endocervical	0	0	(0)	0	0	(0)	0	0	(0)
<b>Male</b>									
All	466	96	(21)	348	64	(18)	482	98	(20)
Anal	67	31	(46)	56	22	(39)	75	32	(43)
Oral	41	14	(34)	38	15	(39)	57	24	(42)
Urethral	358	51	(14)	254	27	(11)	350	42	(12)
<b>Total</b>	<b>523</b>	<b>100</b>	<b>(19)</b>	<b>413</b>	<b>65</b>	<b>(16)</b>	<b>569</b>	<b>99</b>	<b>(17)</b>

\* Percent calculated using total number of positive cultures for which susceptibility testing could be performed (one male anal specimen was not viable for antibiotic susceptibility testing)

**Table 8. Number of Visits, to NYC DOHMH BSTDC clinics, inclusive of all reasons for visit, 3<sup>rd</sup> quarter 2007 (January 01 - September 30, 2007), compared to 3<sup>rd</sup> quarter 2006 (January 01 - September 30, 2006) and full year 2006 (January 01 - December 31, 2006).**

Clinic	2007 through 3 <sup>rd</sup> Quarter		2006 through 3 <sup>rd</sup> Quarter		2006 Full Year	
	N	(%)	N	(%)	N	(%)
Central Harlem	7637	(8.8)	8069	(9.5)	9622	(8.6)
Chelsea	16426	(19.0)	15656	(18.4)	20357	(18.3)
Corona	4935	(5.7)	4478	(5.3)	5890	(5.3)
Crown Heights	5314	(6.1)	4949	(5.8)	6539	(5.9)
East Harlem	3435	(4.0)	3594	(4.2)	5218	(4.7)
Fort Greene	14052	(16.2)	13370	(15.7)	17823	(16.0)
Jamaica	12576	(14.5)	12081	(14.2)	16111	(14.5)
Morrisania	12588	(14.5)	12245	(14.4)	16179	(14.5)
Richmond	1356	(1.6)	1334	(1.6)	1749	(1.6)
Riverside	8359	(9.6)	9220	(10.8)	11985	(10.8)
<b>All Clinics</b>	<b>86678</b>	<b>(100.0)</b>	<b>84996</b>	<b>(100.0)</b>	<b>111473</b>	<b>(100.0)</b>

**Figure 3. Primary and secondary (P&S) syphilis and congenital syphilis reported to the NYC DOHMH. P&S syphilis Case rate (per 100,000 population) by sex, and congenital syphilis cases rate (per 1,000 live births\*), 1997 through 2007\*\*.**



\* For 2006 and 2007 congenital rate, live birth denominator based on 2006 preliminary live birth data (Bureau of Vital Statistics, NYC DOHMH)

\*\* 2007 syphilis rates based on preliminary data.

**Table 9. Male primary and secondary (P&S) syphilis cases: interview status, report of male sex partner(s) and HIV status, 3<sup>rd</sup> quarter 2007 (January 01 - September 30, 2007), compared to 3<sup>rd</sup> quarter 2006 (January 01 - September 30, 2006) and full year 2006 (January 01 - December 31, 2006).**

	Male P&S Cases								
	2007 through 3 <sup>rd</sup> Quarter <sup>1</sup>			2006 through 3 <sup>rd</sup> Quarter			2006 Full Year		
	N	(%)	Years	N	(%)	Years	N	(%)	Years
Male cases	688			391			560		
Median age of men			35			34			34.5
Male cases interviewed	415	(60)		223	(57)		294	(53)	
Interviewed male cases reporting sex with men (MSM)	359	(87)		196	(88)		260	(88)	
Interviewed MSM with HIV <sup>2</sup>	141	(70)		79	(68)		110	(70)	
Median age of MSM			35			32			32

<sup>1</sup> Percent of men interviewed underestimated due to reporting time lag and delay in data entry of interviews into the surveillance system.

<sup>2</sup> Of MSM with known HIV status.

**Table 10. Prevalence of culture positive anorectal gonorrhea infection (Gc-positive) among men who have sex with men, and among women attending BSTDC clinics and tested for anorectal gonorrhea, with and without symptoms\*. Gonorrhea positivity rates for 3<sup>rd</sup> quarter 2007 (January 01 - September 30, 2007), compared to 3<sup>rd</sup> quarter 2006 (January 01 - September 30, 2006) and full year 2006 (January 01 - December 31, 2006).**

	2007 through 3 <sup>rd</sup> Quarter			2006 through 3 <sup>rd</sup> Quarter			2006 Full Year		
	Culture** done	Gc-positive Culture		Culture** done	Gc-positive Culture		Culture** done	Gc-positive Culture	
	N	N	(%)	N	N	(%)	N	N	(%)
<b>Female</b>									
All	72	2	(3)	78	1	(1)	97	1	(1)
Symptomatic	13	0	(0)	13	1	(8)	19	1	(5)
Asymptomatic	59	2	(3)	65	0	(0)	78	0	(0)
<b>MSM</b>									
All	1777	64	(4)	1999	58	(3)	2547	75	(3)
Symptomatic	122	11	(9)	138	11	(8)	180	13	(7)
Asymptomatic	1655	53	(3)	1861	47	(3)	2367	62	(3)

\* Men or women were considered symptomatic if their record included a chief complaint of anal or rectal symptoms.

\*\* An Individual person may contribute more than one test during the interval.

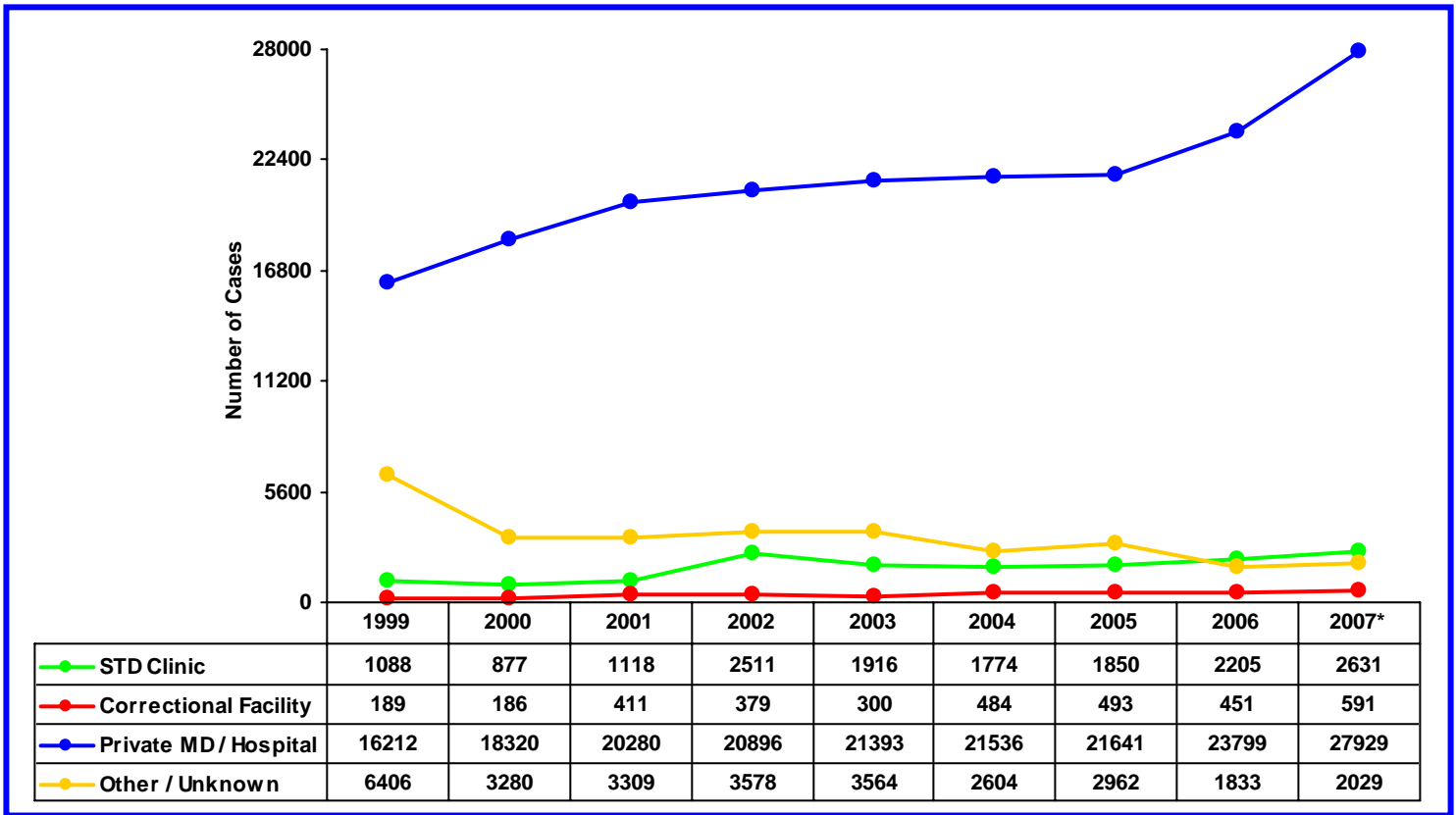
**Table 11. Seroreactive syphilis test results for persons<sup>1</sup> attending BSTDC clinics, by sex and sex of partner. Seroreactive syphilis test rates for 3<sup>rd</sup> quarter 2007 (January 01 - September 30, 2007), compared to 3<sup>rd</sup> quarter 2006 (January 01 - September 30, 2006) and full year 2006 (January 01 - December 31, 2006).**

	2007 through 3 <sup>rd</sup> Quarter			2006 through 3 <sup>rd</sup> Quarter			2006 Full Year		
	RPRs done	Reactive RPRs <sup>2</sup>		RPRs done	Reactive RPRs <sup>2</sup>		RPRs done	Reactive RPRs <sup>2</sup>	
	N	N	(%)	N	N	(%)	N	N	(%)
<b>Female</b>									
ALL	19108	342	(2)	18194	442	(2)	23834	549	(2)
<b>Men</b>									
ALL	25780	833	(3)	24493	959	(4)	32162	1239	(4)
MSM	2224	315	(14)	2343	290	(12)	2995	379	(13)
MSW	11689	315	(3)	13892	465	(3)	17431	592	(3)

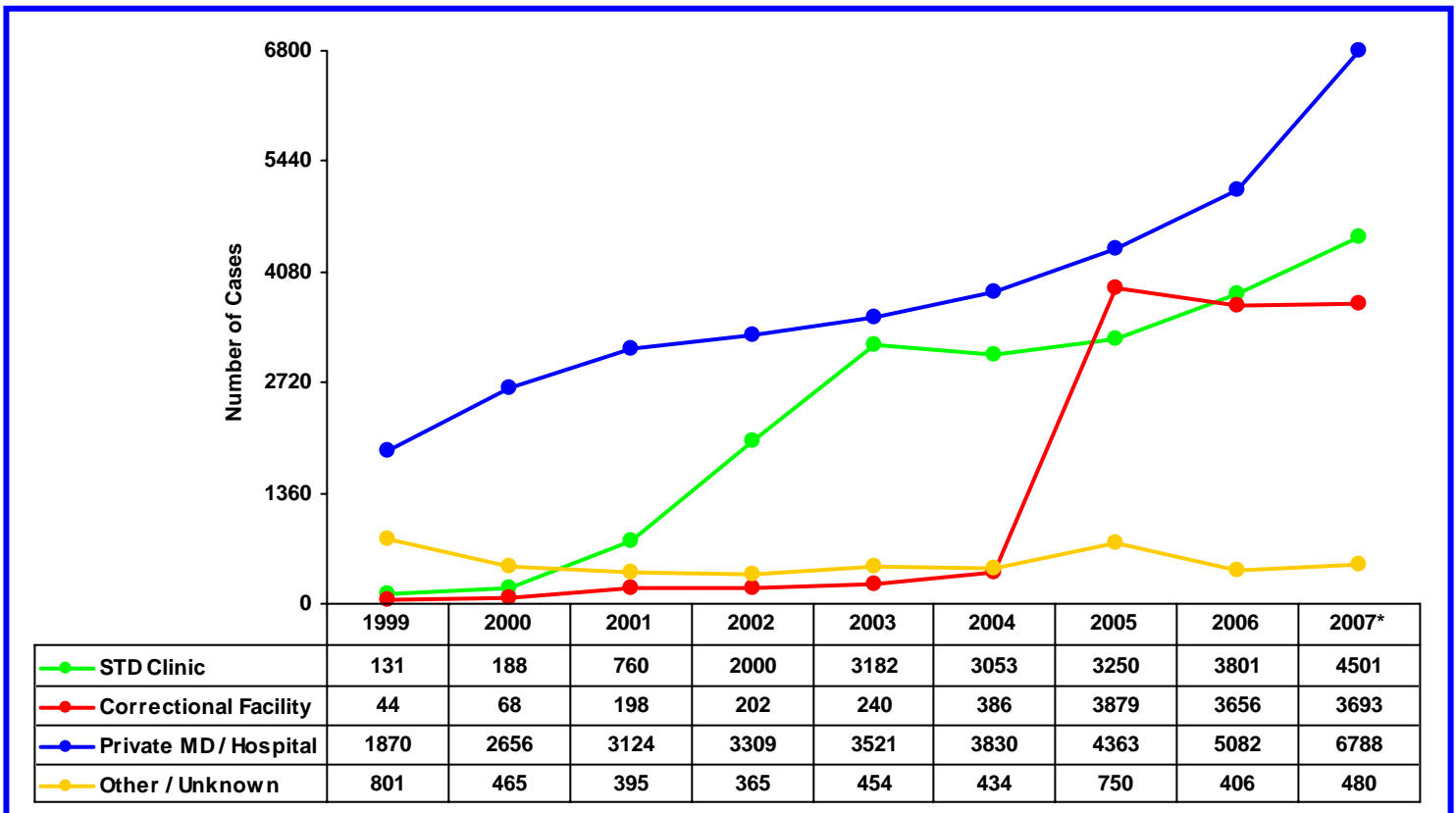
<sup>1</sup> Includes RPR testing from each person's first clinic visit during the interval.

<sup>2</sup> Reactive tests are those reactive RPR confirmed by reactive FTA.

**Figure 4a. Female *Chlamydia trachomatis* cases reported to the NYC DOHMH. Cases by provider type, 1999 through 2007\*.**



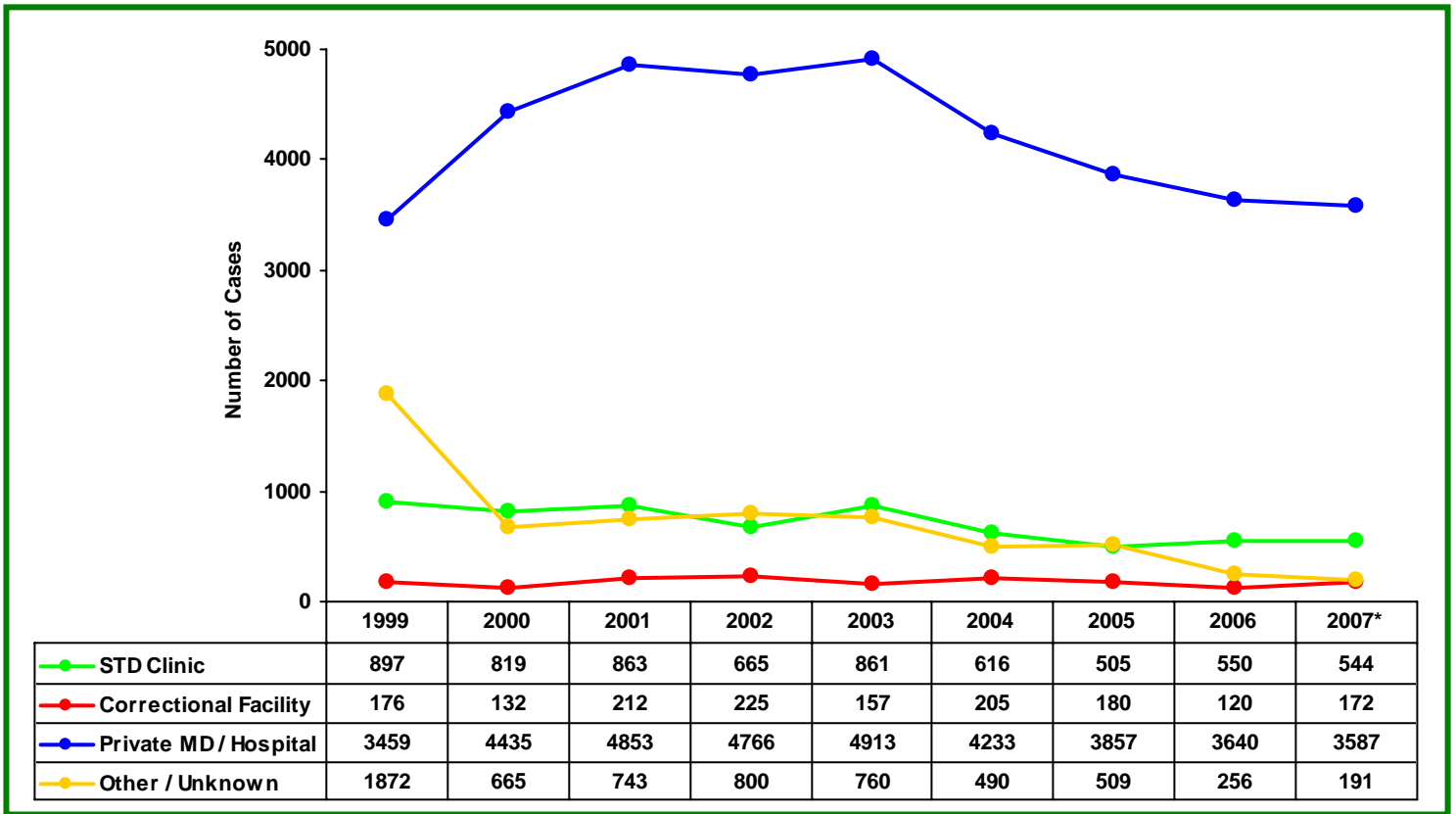
**Figure 4b. Male *Chlamydia trachomatis* cases reported to the NYC DOHMH. Cases by provider type, 1999 through 2007\*.**



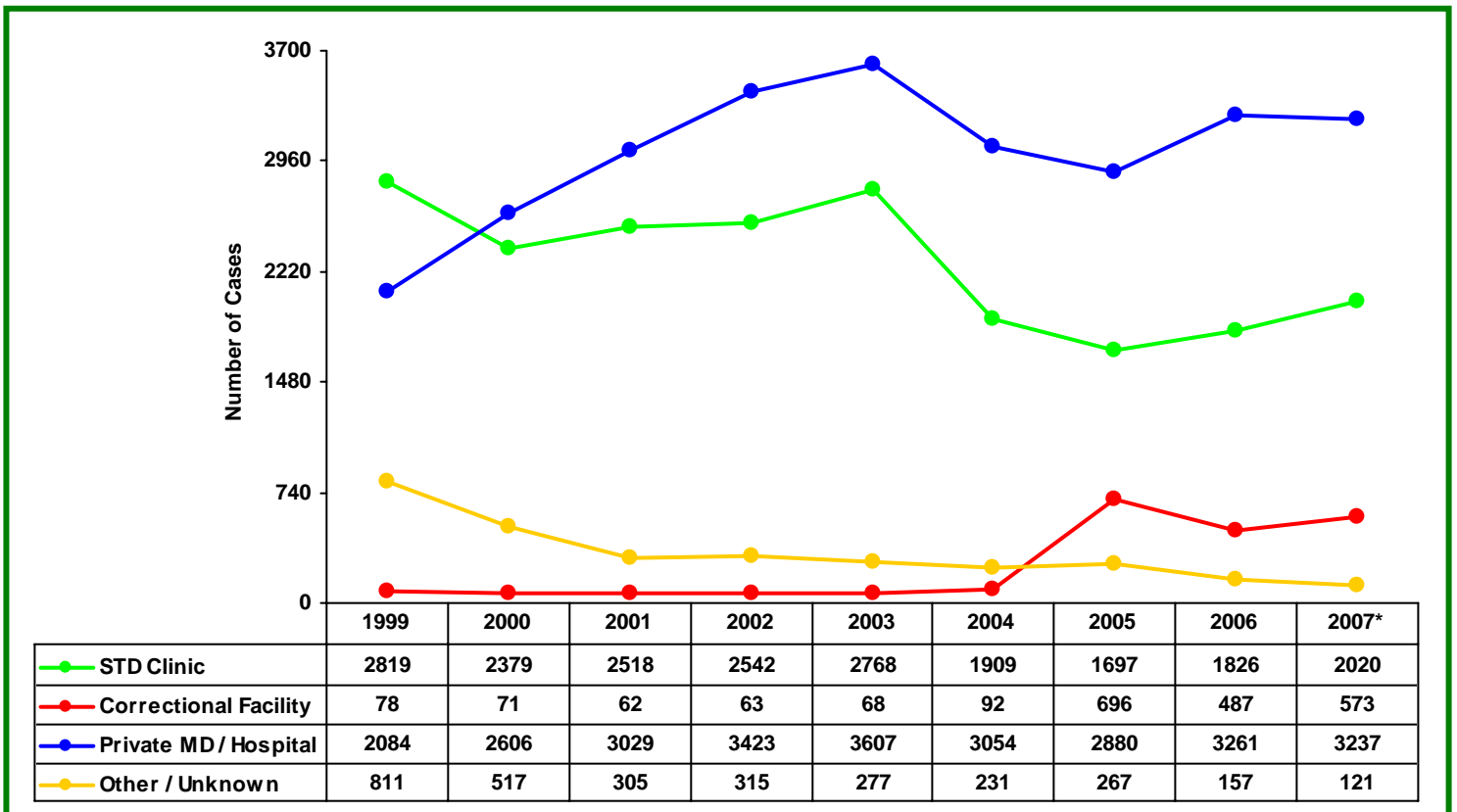
\* 2007 cases based on preliminary data which have been annualized.



**Figure 5a. Female *Neisseria gonorrhoeae* cases reported to the NYC DOHMH. Cases by provider type, 1999 through 2007\*.**



**Figure 5b. Male *Neisseria gonorrhoeae* cases reported to the NYC DOHMH. Cases by provider type, 1999 through 2007\*.**



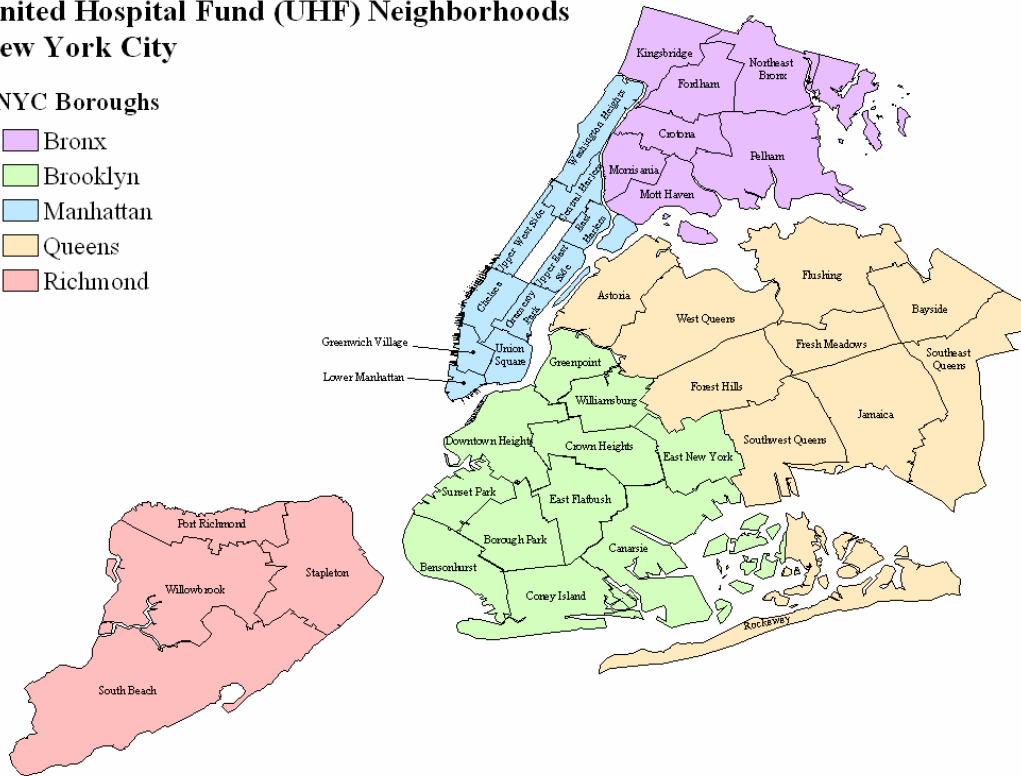
\* 2007 cases based on preliminary data which have been annualized.

**Figure 6. New York City neighborhoods\*.**

**United Hospital Fund (UHF) Neighborhoods  
New York City**

**NYC Boroughs**

- Bronx
- Brooklyn
- Manhattan
- Queens
- Richmond



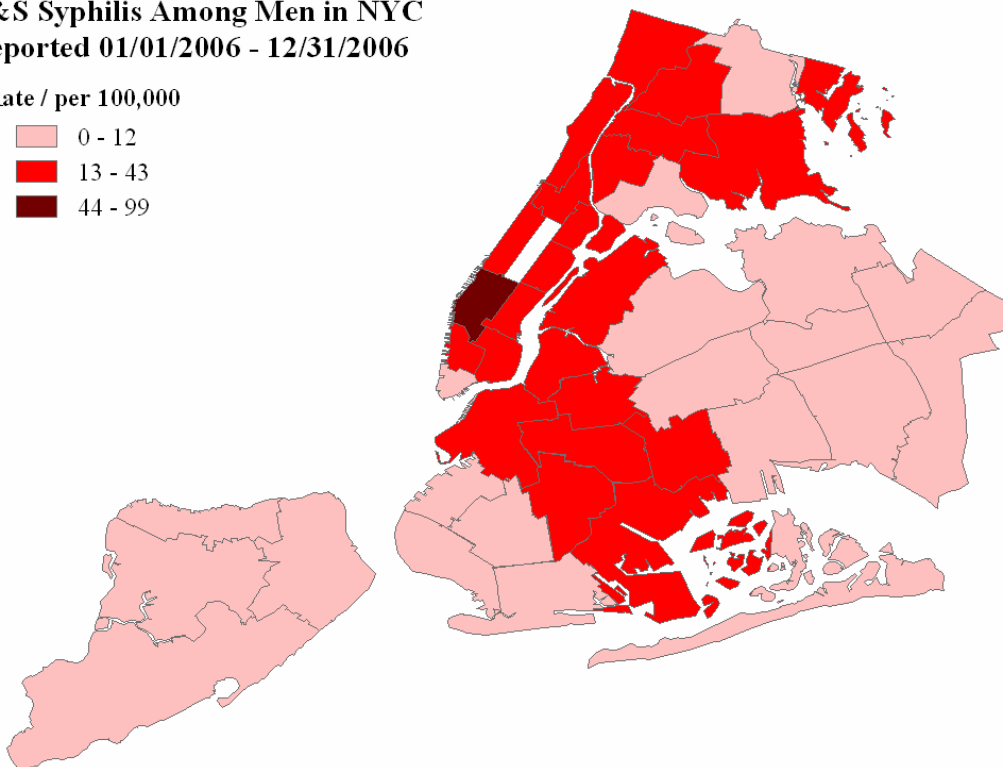
\* Neighborhoods defined by United Hospital Fund (UHF) definitions of NYC neighborhoods, which are specified by zip codes. For a complete listing of UHF neighborhoods and their zip codes, go to [nyc.gov/health](http://nyc.gov/health).

**Figure 7. Male primary and secondary syphilis reported to the NYC DOHMH. Case rate per 100,000 population in New York City neighborhoods, full year 2006.**

**P&S Syphilis Among Men in NYC  
Reported 01/01/2006 - 12/31/2006**

**Rate / per 100,000**

- 0 - 12
- 13 - 43
- 44 - 99

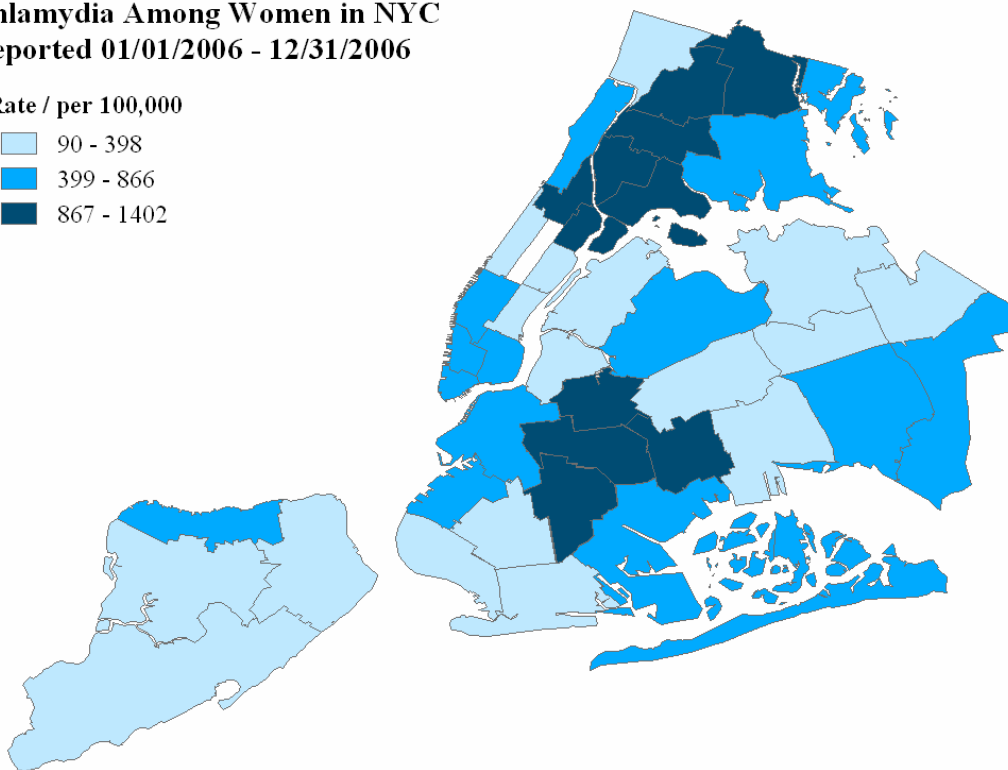


**Figure 8a. Female *Chlamydia trachomatis* reported to the NYC DOHMH. Case rate per 100,000 population in New York City neighborhoods, full year 2006.**

**Chlamydia Among Women in NYC  
Reported 01/01/2006 - 12/31/2006**

Rate / per 100,000

- 90 - 398
- 399 - 866
- 867 - 1402



**Figure 8b. Male *Chlamydia trachomatis* reported to the NYC DOHMH. Case rate per 100,000 population in New York City neighborhoods, full year 2006.**

**Chlamydia Among Men in NYC  
Reported 01/01/2006 - 12/31/2006**

Rate / per 100,000

- 21 - 269
- 270 - 644
- 645 - 926

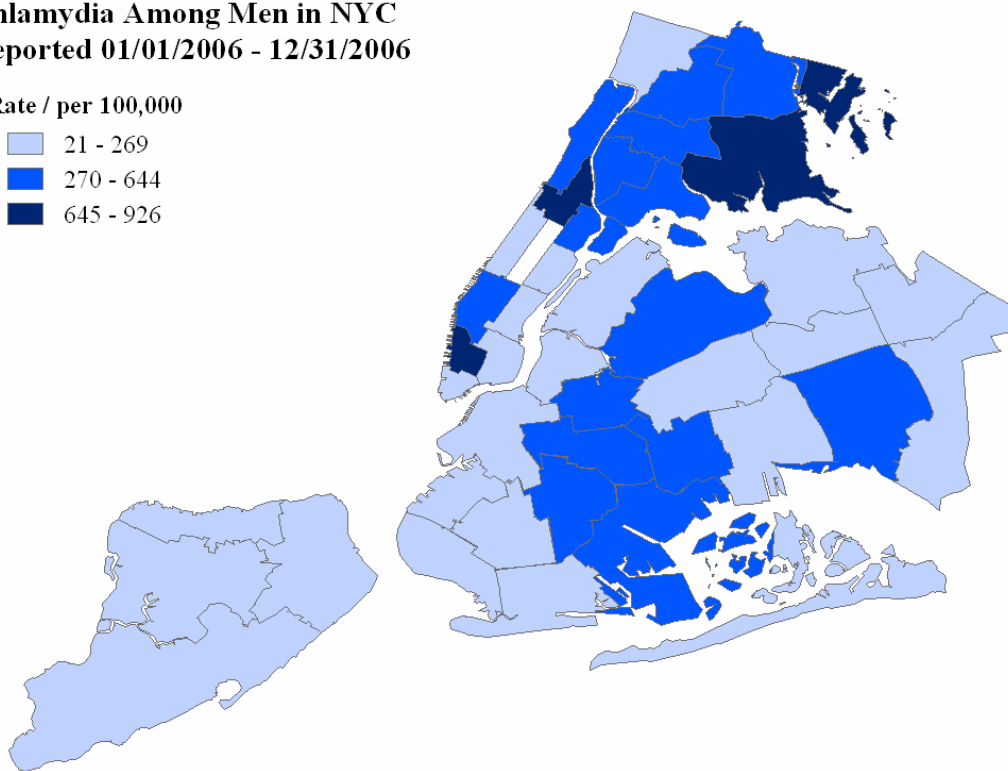


Figure 9a. **Female *Neisseria gonorrhoeae*** reported to the NYC DOHMH. Case rate per 100,000 population in New York City neighborhoods, full year 2006.

**Gonorrhea Among Women in NYC  
Reported 01/01/2006 - 12/31/2006**

Rate / per 100,000

- 15 - 66
- 67 - 162
- 163 - 305

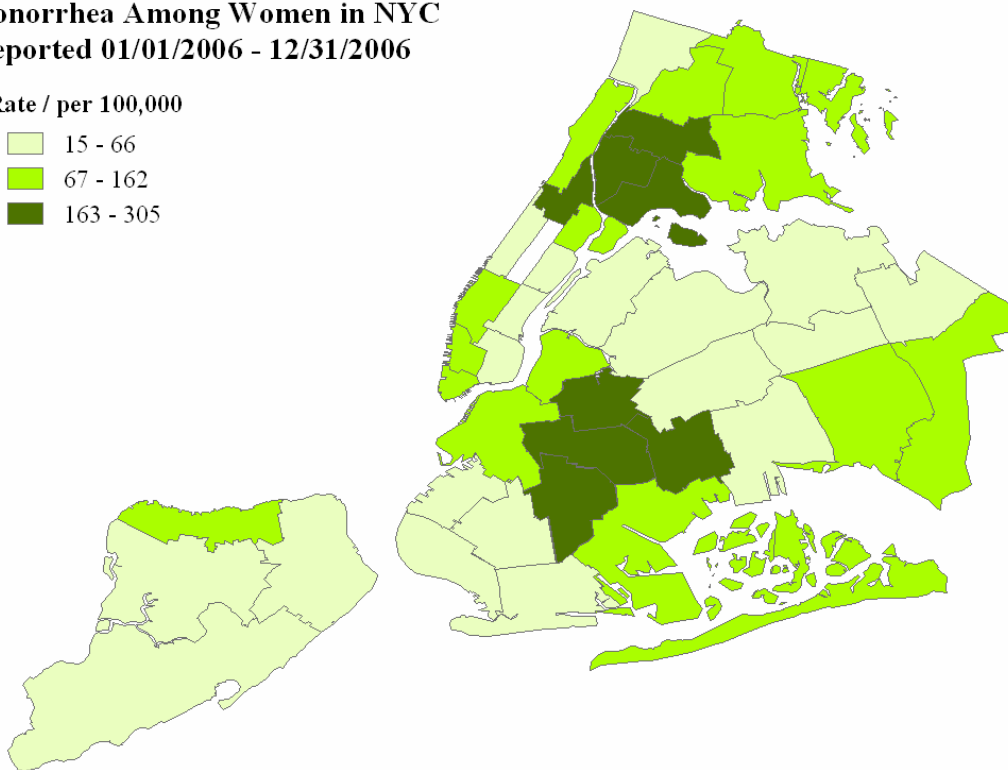
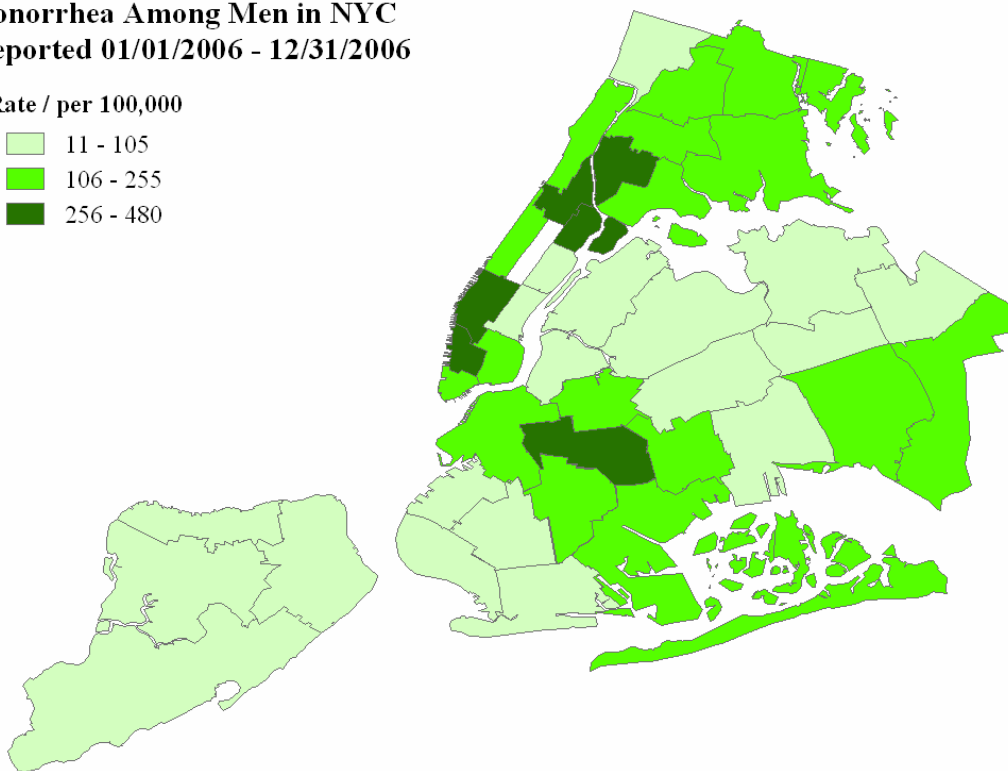


Figure 9b. **Male *Neisseria gonorrhoeae*** reported to the NYC DOHMH. Case rate per 100,000 population in New York City neighborhoods, full year 2006.

**Gonorrhea Among Men in NYC  
Reported 01/01/2006 - 12/31/2006**

Rate / per 100,000

- 11 - 105
- 106 - 255
- 256 - 480



The Bureau of STD Control operates **STD clinics and HIV Testing & Counseling sites** throughout the city. BSTDC clinics offer confidential testing and treatment for a spectrum of sexually transmitted diseases. All clinics provide confidential and anonymous HIV testing and counseling. All services are free. These clinics are located in:

Clinics	Address
Central Harlem	2238 5 <sup>th</sup> Avenue, 3 <sup>rd</sup> Floor, New York, NY 10037
Chelsea	303 9 <sup>th</sup> Avenue, 2 <sup>nd</sup> Floor, New York, NY 10001
Corona	34-33 Junction Blvd, Jackson Heights, NY 11372
Bushwick*	335 Central Avenue, Brooklyn, NY 11221
East Harlem	158 East 115 <sup>th</sup> Street, 1 <sup>st</sup> Floor, New York, NY 10029
Fort Greene	295 Flatbush Avenue Ext, 2 <sup>nd</sup> Floor, Brooklyn, NY 11201
Jamaica	90-37 Parsons Blvd, 1 <sup>st</sup> Floor, Jamaica, NY 11432
Morrisania	1309 Fulton Avenue, 2 <sup>nd</sup> Floor, Bronx, NY 10456
Richmond	51 Stuyvesant Place, 1 <sup>st</sup> Floor, Staten Island, NY 10301
Riverside	160 West 100 <sup>th</sup> Street, New York, NY 10025

\* Formerly located in Crown Heights.

- Please call 311 to locate the nearest clinic or check our website at [www.nyc.gov/health/std](http://www.nyc.gov/health/std).
- Our staff can also assist in partner location and notification for HIV and other STD. Call the Contact Notification Assistance Program (CNAP) at (212) 693-1419.
- For provider reporting of STD:  
The Universal Reporting Form (URF) can be obtained by calling 1-866-NYC-DOH1 (1-866-692-3641) or accessing it online at: <http://www.nyc.gov/html/doh/html/hcp/hcp-urf.shtml>
- For provider reporting of HIV/AIDS:  
For assistance in reporting a case of HIV/AIDS or to receive Provider Report Forms, please call (212) 442-3388.

#### Acknowledgements:

Thanks to all the staff of the Surveillance Team for collecting and collating the data presented in the quarterly report, and to Mary Shao for the preparation of this report.

#### For questions regarding this report, please contact:

Ellen Klingler ([eklingl@health.nyc.gov](mailto:eklingl@health.nyc.gov))

or

Preeti Pathela ([ppathela@health.nyc.gov](mailto:ppathela@health.nyc.gov))

or

Mary Shao ([yshao1@health.nyc.gov](mailto:yshao1@health.nyc.gov))

#### Published by:

The Bureau of Sexually Transmitted Disease Control  
New York City Department of  
Health & Mental Hygiene

125 Worth Street, Room 207

New York, NY 10013

Tel: (212) 788-4423

Fax: (212) 788-4431

#### Suggested citation for use:

The New York City  
Department of Health and Mental Hygiene  
Bureau of Sexually Transmitted Disease Control  
*Quarterly Report Vol. 5, No. 3* September 2007.